

Various methods of heating a building

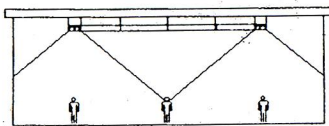
Building in question

Length = 50 m, Width = 20 m, Average height = 6.5 m, Vol. = 6500 m³

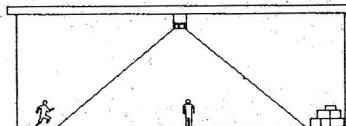
Outdoor T = -5°C, Air change = 0.5 vol/hour

Total thermal dispersion = 136 kW (117,000 kcal/h)

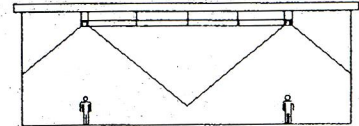
Installed thermal capacity setting = 166 kW



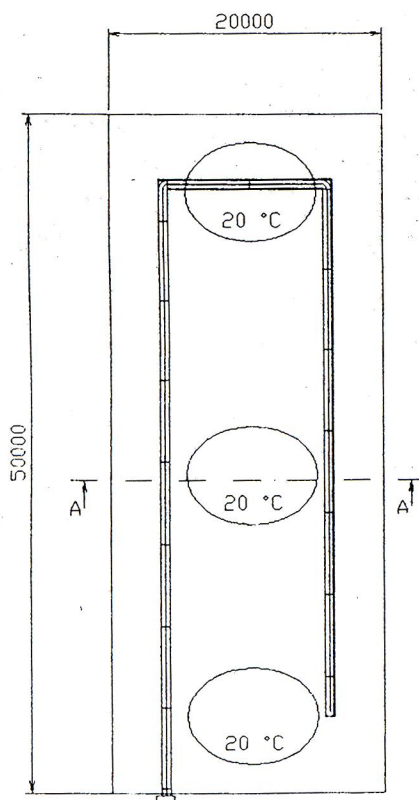
SECTION A-A



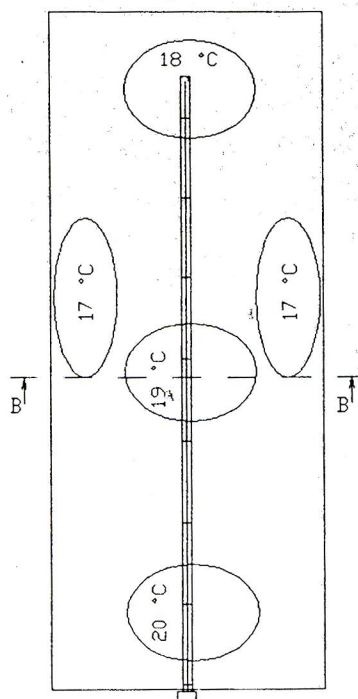
SECTION B-B



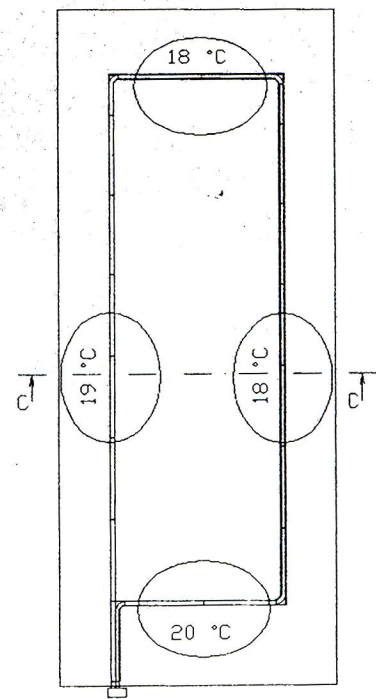
SECTION C-C



SOLUTION A



SOLUTION B



SOLUTION C